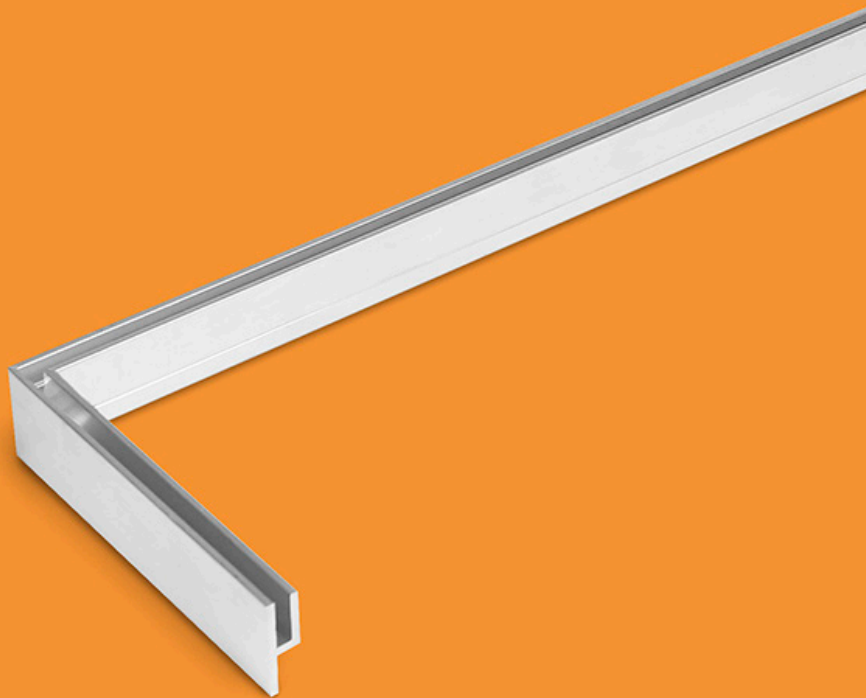


dvc

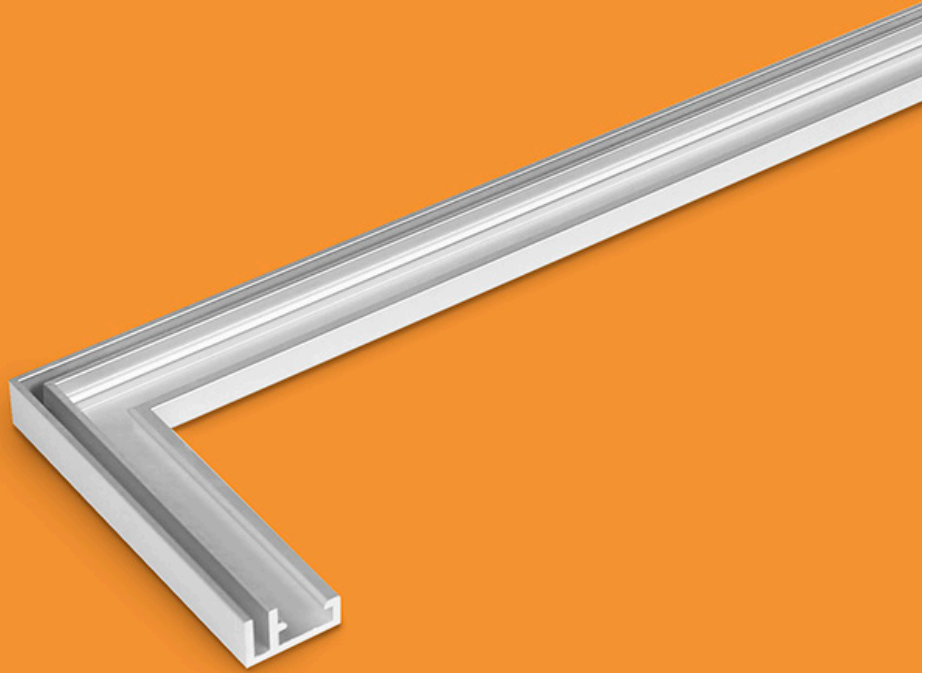
Aluminum Extrusion Profiles



“h” SINGLE-SIDED SEG



- Silicone groove for fabric graphic
- Easily mounts to the inside wall of your existing light box cavity to convert to silicone edge graphics
- Lower cost for graphics with the SEG conversion
- Can be ordered in 10' or 20' lengths
- Raw aluminum
- Can be powder coated any color



.5" SINGLE-SIDED SEG

- Silicone groove for fabric graphic
- Slim profile
- Wall mount only
- Can be ordered in 20' lengths or it can be cut and built from 16" x 20" to 16' x 100'
- Clear anodized aluminum
- Can be powder coated any color



1.5" SINGLE-SIDED SEG

- Silicone groove for fabric graphic
- NEW** • Silicone groove on back for black fabric (not double-sided)
- NEW** • Silicone groove to hold a block-out liner
- Can be ordered in 20' lengths or it can be cut and built from 16" x 20" to 16' x 100'
- Clear anodized aluminum
- Can be powder coated any color
- Can be wall mounted, hung from a ceiling or freestanding



3" SINGLE-SIDED SEG



- Silicone groove for fabric graphic
- Light box option available, the power supply will be external

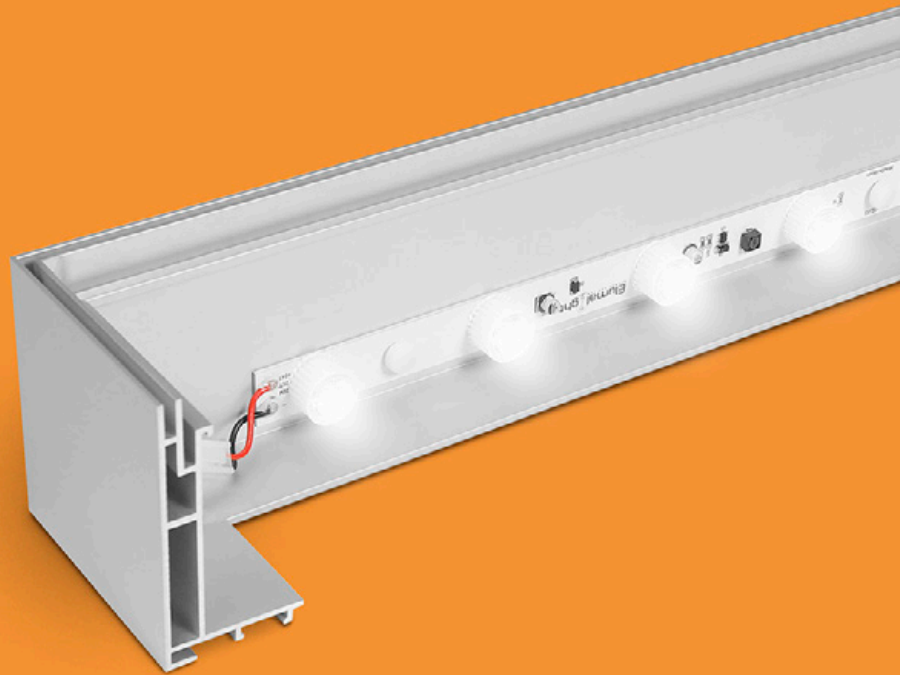


- Silicone groove to hold a block-out liner or fabric diffuser
- Can be ordered in 20' lengths or it can be cut and built from 16" x 20" to 16' x 100'
- Clear anodized aluminum
- Can be powder coated any color
- Can be wall mounted, hung from a ceiling or freestanding
- UL Certified



3" SINGLE-SIDED PLEX

- Groove for plex
- Light box option available, the power supply will be external
- Groove can hold 1/8" clear + 1/8" milk plex or 1/4" clear with graphic permanently applied
- Magnetic hinge opening for graphic loading
- Can be ordered in 20' lengths or it can be cut and built from 16" x 20" to 16' x 100'
- Clear anodized aluminum
- Can be powder coated any color
- Can be wall mounted, hung from a ceiling or freestanding
- UL Certified



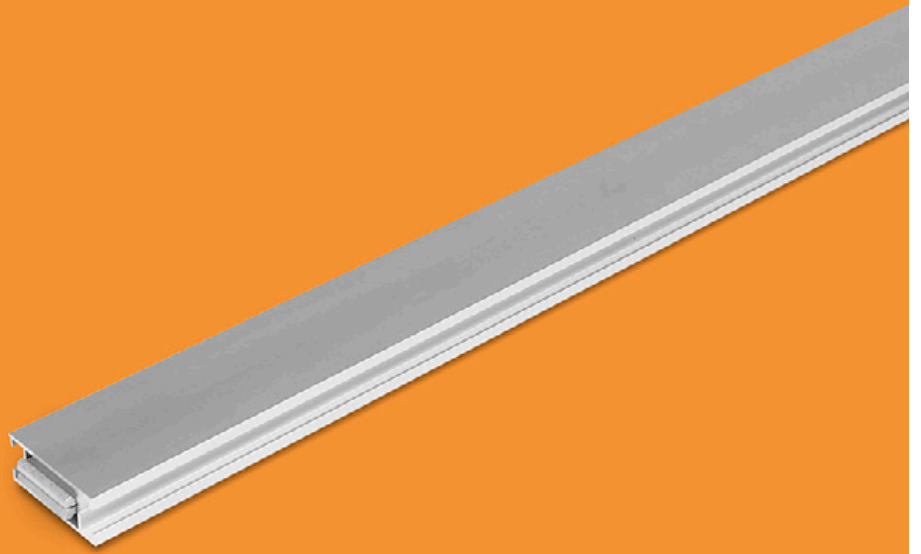
4" SINGLE-SIDED SEG LIGHT BOX

- Silicone groove for fabric graphic
- Even illumination, no hot spots
- NEW** • Silicone groove to hold optional fabric diffuser.
- NEW** • Wall bracket included
- Can be ordered in 20' lengths or it can be cut and built from 16" x 20" to 16' x 100'
- Clear anodized aluminum
- Can be powder coated any color
- Can be wall mounted, hung from a ceiling or freestanding
- UL Certified



5" DOUBLE-SIDED SEG LIGHT BOX

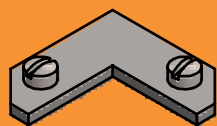
- Silicone groove for fabric graphic
- Even illumination, no hot spots
- NEW** • Silicone groove to hold optional fabric diffuser
- Can be ordered in 20' lengths or it can be cut and built from 16" x 20" to 16' x 100'
- Clear anodized aluminum
- Can be powder coated any color
- Can be wall mounted, hung from a ceiling or freestanding
- UL Certified



INTERNAL SUPPORT PROFILE

- This profile is used to build an internal “cage” to prevent larger frames from bowing
- Can be ordered in 20' lengths or it can be cut and built to nearly any size
- Clear anodized aluminum
- Can be powder coated any color

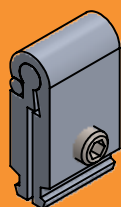
ACCESSORIES



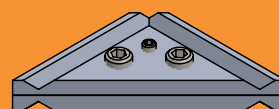
single-sided 0.5" corner lock kit



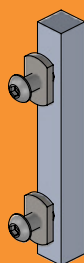
single-sided 0.5" splicer kit



support straight lock kit



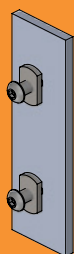
single-sided 1.5" corner lock kit



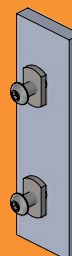
single-sided 1.5" splicer kit



support splicer kit

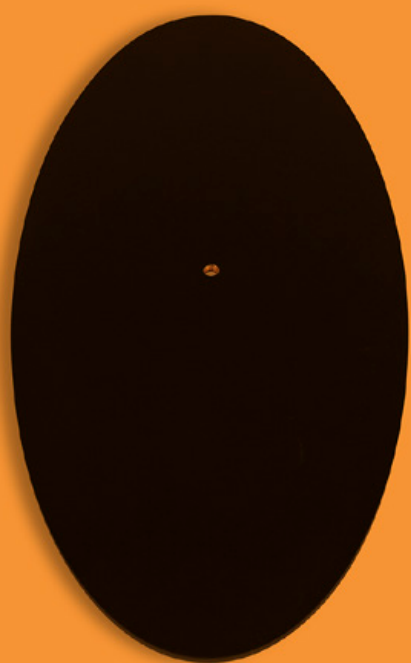


light box 4" splicer kit



double-sided light box 5" splicer kit

FEET OPTIONS



OVAL
9" x 19" x .25"

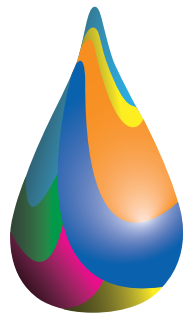


OVAL W/FLAT ENDS
10" x 20" x .25"

PRICING

ALUMINUM PROFILES FOR SEG	PRICE/STICK
DVC-SS-1" H Gasket – 10' stick	\$41.40 ea.
DVC-SS-1" H Gasket – 20' stick	\$60.00 ea.
DVC-SS-.5" – 10' stick	\$41.40 ea.
DVC-SS-.5" – 20' stick	\$60.00 ea.
DVC-SS-1.5" – 10' stick	\$65.40 ea.
DVC-SS-1.5" – 20' stick	\$105.60 ea.
DVC_SS_3" Lightbox 10' stick	\$87.00 ea.
DVC_SS_3" Lightbox 20' stick	\$150.00 ea.
DVC_SS_4" Lightbox 10' stick	\$101.40 ea.
DVC_SS_4" Lightbox 20' stick	\$180.00 ea.
DVC_DS_5" Lightbox 10' stick	\$117.00 ea.
DVC_DS_5" Lightbox 20' stick	\$210.00 ea.
DVC-Plex LB-3.0 Parts 1 to 3 10'sticks	\$202.00 ea.
DVC-Plex LB-3.0 Parts 1 to 3 20'sticks	\$360.00 ea.
DVC_Internal Support 10' stick	\$57.00 ea.
DVC_Internal Support 20' stick	\$90.00 ea.

- All sticks are either clear (silver) anodized or raw/milled aluminum
- These costs are simply to pull and sell on 10' and/or 20' material
- 10% discount on quantities of 15 sticks or more (either length)
- 20% discount on quantities of 50 sticks or more (either length)



dvc

dandreavisual.com/silicone-edge-graphics